

Handheld Ultrasonic Flowmeter



| Features |

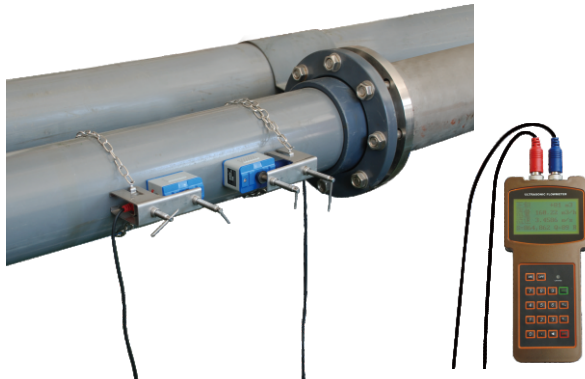
- **High Accuracy measuring**
Accuracy: $\pm 1\%$, linearity: 0.5%, repeatability: 0.2%
- **Wide measuring range**
Several types transducer for selection, measuring pipe size from DN15mm to DN6000mm
- **Large capacity battery**
Built-in rechargeable Ni-MH battery, provide over 12 hours of continuous operation
- **Non-intrusive measuring**
Non-intrusive, clamp-on transducer, no pressure drop, no pipe disturbance
- **Support Multiple Language Menu**
Chinese, English, Italian and other languages can be customized
- **Large LCD display**
Display instantaneous flow, accumulated flow (positive, negative and net), velocity, working status etc.
- **Built-in data logger**
Built-in 24K data logger, store over 2000 lines measuring data

Handheld Ultrasonic Flowmeter

| Liquid Type |

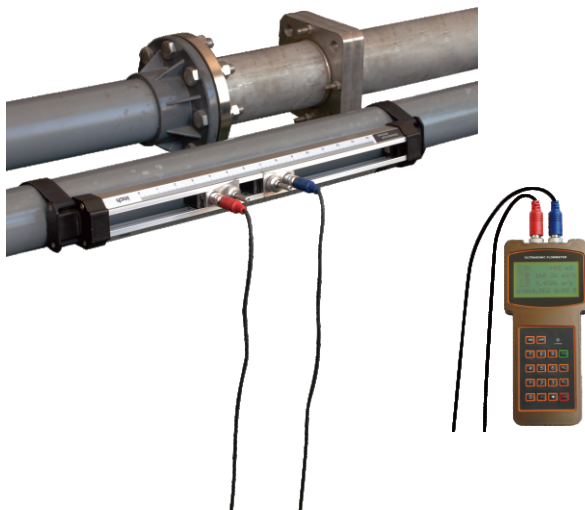
This flowmeter can be virtually applied to a wide range of measurement. A variety of liquid applications can be accommodated: ultra-pure liquids, potable water, chemicals, raw sewage, reclaimed water, cooling water, river water, plant effluent. etc

| Measuring Diagram |



| Clamp on Transducers |

- Install the clamp on transducer (with magnet) on the pipe, can finish the flow measurement. No pressure drop, no need cut off pipe.
- Several types transducers for selection, measuring pipe size from DN15mm to DN6000mm.
- Several types transducers for selection,

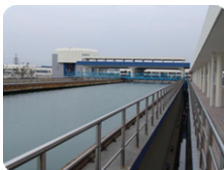


| Clamp on Mounting Bracket Transducers |

- Bracket transducer can simplify the ultrasonic flowmeter installation process, shorten installation time and improve installation accuracy.
- Install the clamp on bracket transducer (with magnet) on the pipe, can finish the flow measurement. No pressure drop, no need cut off pipe.
- Several types bracket transducers for selection, measuring pipe size from DN15mm to Dn700mm.
- Several types bracket transducers for selection, measuring temperature range from -30°C to 160°C

| Applications |

Water supply and drainage



Heating



Construction of Energy-saving



Metallurgy



Petrochemical

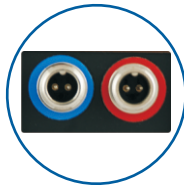


Power

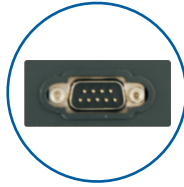


Handheld Ultrasonic Flowmeter

| Parts Descriptions |



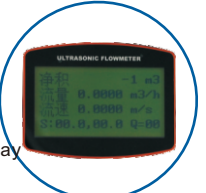
Transducer Interface



Communication & Signal Output Interface



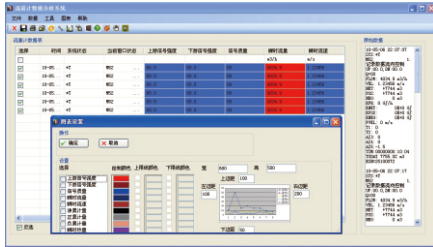
Display



4×16 character screen with backlight can display instantaneous flow, accumulated flow (positive, negative and net), velocity, working status etc

• 32Kbit Data Storage

It is convenient for measuring data storage, if use our company's "Flow data analysis, statistical software" for processing, can finish the tabulation, statistical, data analysis, printing reports, production flow curve and other functions.



Aluminum alloy Carrying Case



| Optional Transducer |

Types	Picture	Spec.	Model	Measurement Range	Temperature	Dimension
Clamp on		Small Size	TS-2	DN15~DN100	-30~90℃	45×25×32mm
		Medium Size	TM-1	DN50~DN700	-30~90℃	64×39×44mm
		Large Size	TL-1	DN300~DN6000	-30~90℃	97×54×53mm
High Temperature Clamp on		Small Size	TS-2-HT	DN15~DN100	-30~160℃	45×25×32mm
		Medium Size	TM-1-HT	DN50~DN700	-30~160℃	64×39×44mm
		Large Size	TL-1-HT	DN300~DN6000	-30~160℃	97×54×53mm
Mounting Bracket Clamp on		Small Size	HS	DN15~DN100	-30~90℃	318×59×85mm
		Medium Size	HM	DN50~DN300	-30~90℃	568×59×85mm
		Extended	EB-1	DN300~DN700	-30~90℃	188×59×49mm
High Temperature Mounting Bracket Clamp on		Small Size	HS-HT	DN15~DN100	-30~160℃	318×59×110mm
		Medium Size	HM-HT	DN50~DN300	-30~160℃	568×59×110mm
		Extended	EB-1-HT	DN300~DN700	-30~160℃	188×59×49mm

Handheld Ultrasonic Flowmeter

| Datasheet |

Items		Performance & Parameter
Convertor	Principle	Transit-time ultrasonic flowmeter
	Accuracy	$\pm 1\%$
	Display	4×16 character LCD with backlight, support the language of Chinese, English and Italy
	Signal Output	1 way OCT pulse output (Pulse width 6~1000ms, default is 200ms)
	Data Interface	Insulate Rs232 serial interface, upgrade the flowmeter software by computer
Pipe Installation Condition	Pipe Material	Steel, Stainless steel, Cast iron, Copper, Cement pipe, PVC, Aluminum, Glass steel product, liner is allowed
	Pipe Diameter	15~6000mm
	Straight Pipe	Transducer installation should be satisfied: upstream 10D, downstream 5D, 30D from the pump
Measuring Medium	Type of Liquid	Single liquid can transmit sound wave, such as Water (hot water, chilled water, city water, sea water, waste water, etc.); Sewage with small particle content; Oil (crude oil, lubricating oil, diesel oil, fuel oil, etc.); Chemicals (alcohol, etc.); Plant effluent; Beverage; Ultra-pure liquids, etc.
	Temperature	-30~160℃
	Turbidity	No more than 10000ppm and less bubble
	Flowrate	0~ ± 10 m/s
Working Environment	Temperature	Convertor: -20~60℃; Flow Transducer: -30~160℃
	Humidity	Convertor: 85%RH; Flow Transducer: Ip67
Power Supply	3 AAA built-in Ni-MH batteries 1.2V(for over 12 hours of operation). 90V-260V AC adapter	
Power Consumption	1.5W	
Case Material	ABS	
Dimension	200*93*32MM(Convertor)	